

**Our Karjat Center is designed  
to give your patients a  
“Refreshed & Comforting”  
Environment**



**Our well designed spaces promote  
Peace & Speedy Recovery,  
A place Where Your Patients can feel**

***Safe, Cared for & Inspired***





# Infrastructure in Calida

*Each area is thoughtfully Designed to promote emotional well being*

## Clinical Department



**Counselling Room**



**Consulting Room**



**Nursing Room**



**ECT Room**

## Activity Zone



**Yoga Section**



**Reading Area**

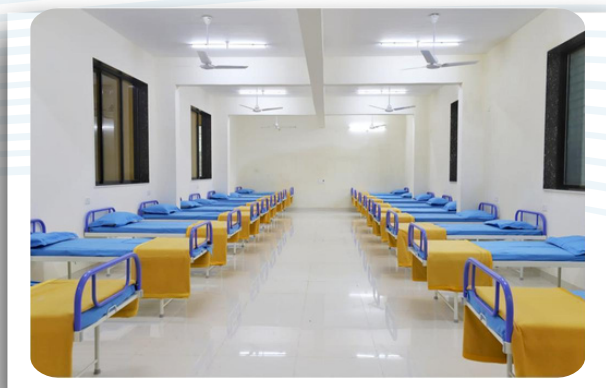


**Indoor  
Activity Zone**



**Outdoor  
Activity Zone**

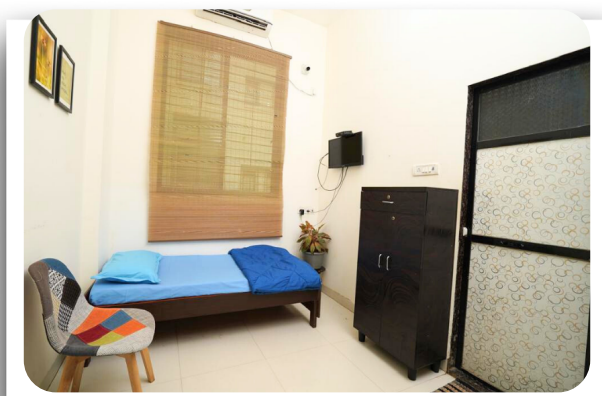
## Room Categories & Tariff



**General Ward  
Rs. 40,000**



**Three Bedded AC Room  
Rs. 66,000**



**Single Deluxe Room  
Rs. 1,20,000**



# Meet Our Team



**Dr. Prashant Dasud**

**M.D. (Psychiatry) & Director**



**Dr. Santosh Pawar**

**M.D. (Radiodiagnosis) & Director**



**Dr. Abhijeet Bombe**

**M.B.B.S, D.P.M. (Psychiatry)**



## VISION

At Calida, our vision is to enable individuals with psychiatric disorders to recover and live as independently as possible in the community.



## MISSION

We aim to engage patients and aid recovery with disorder management, psychological functioning, and a focus on personal satisfaction.



## GOAL

Our goal is to help people with psychiatric disorders through individual and environmental interventions following the Biopsychosocial model of psychiatric disorders.



# Rehabilitation Team:

## Our Residential Team Includes

- Expert Psychiatrists / Super-Speciality Psychiatrists
- Skilled Clinical & Rehabilitation Psychologists
- Experienced Psychiatric Nurses
- Senior Anaesthetists
- Resident Medical Officer
- Vigilant Attendants

## Additionally, to ensure thorough care, We have a supporting team including:

- Occupational Therapists
- Physiotherapists
- Art and Music Therapists
- Nutritionist Providing Expert Dietary Guidance



## Why Choose Calida?

### • Evidence-Based Treatment

Medico Driven setup by Eminent Doctors, Individualized Care Plans

### • Mindfulness & Safe Environment

Comfortable Living with Vibrant Surroundings, Reading Lounge & spacious Activity Zone

### • 24/7 Expert care & support

Round-the-clock medical & psychological support, timely Intervention & continues Monitoring Throughout Journey

### • Quality Services as per NABH Guidelines

We are committed to delivering world-class Mental Healthcare, That means Highest Quality & patient Satisfaction

### • Pickup Facility & Customer Care Services

Convenient and Reliable Pickup Service & Dedicated Customer Care Team to assist you with all queries.

## **Our Services:**

---

**Calida Rehab offers a wide range of services for psychiatric disorders such as Schizophrenia, Depression, Substance Use Disorders (Alcohol, cannabis, opioids, etc), Dementia, Bipolar Disorders Anxiety, Disorders, and Developmental Disorders.**

## **Wide Range Of Therapies**

- **Recovery-oriented Cognitive Therapy (CT-R)**
- **Cognitive Behavioural Therapy (CBT)**
- **Motivational Enhancement Therapy (MET)**
- **Rational Emotive Behaviour Therapy (REBT)**
- **Dialectical Behaviour Therapy (DBT)**
- **Psychodynamic Therapy (PT)**
- **Supportive Psychotherapy**
- **Group Therapies**
- **Music Therapy**
- **Art Therapy**
- **Dance Therapy (Zumba)**
- **Yoga Therapy**
- **Occupational Therapy**
- **Physiotherapy**



**calidarehab@gmail.com**



**www.calidarehab.com**



**8452980789**

## **Address:**

**55/1/A, Tata road, Village: Bhaliwadi, Post: Goulwadi,  
District:, Karjat, Maharashtra 410201**